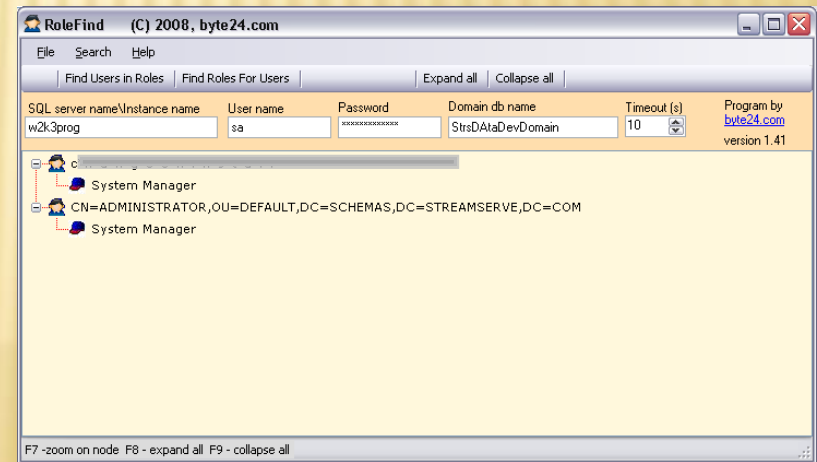
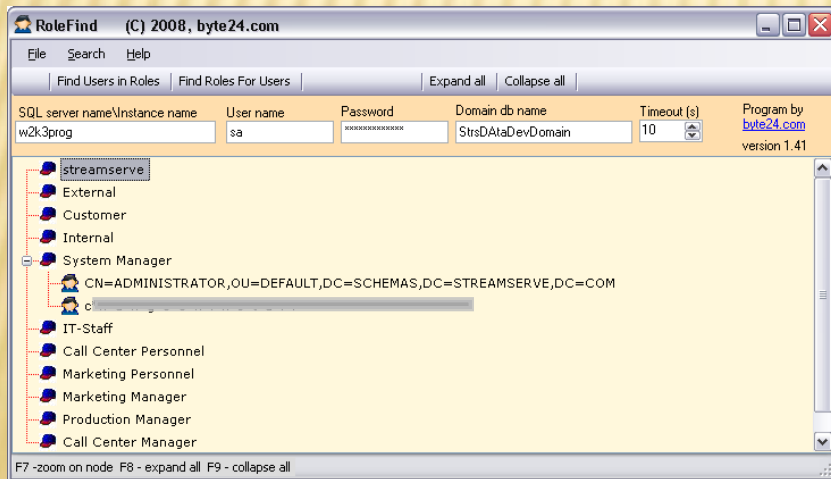


RoleFind

The easy way to display users and groups
in StreamServe Persuasion databases

RoleFind in a nutshell

- ✘ **RoleFind** turns your StreamServe StreamStudio user database inside out to show you everything.
- ✘ **RoleFind** shows all users and groups inside it – and shows you where they all belong.
- ✘ **RoleFind** is simple to install, simple to configure - and even simpler to use.



Some information was intentionally hidden in this image.

Some information was intentionally hidden in this image.

How does **RoleFind** fit in?

Aha!
Now I can see how all my
StreamStudio users and
groups fit together!



RoleFind

enables administrators to
see how all users and groups
fit together in StreamStudio
– all in one place!